

Open for business

Narrandera Shire Council
Industry Prospectus



Narrandera
Shire Council

Narrandera Shire Council is committed to creating a place where people love to live, work and invest.

We've already done all the groundwork. All you have to do is pick up the phone and see how we can help you find your next opportunity.



Welcome to Narrandera Shire

Located in the heart of the NSW Riverina, Narrandera Shire is a rare find, presenting countless opportunities to start something special and watch it grow.

You'll find us on the banks of the Murrumbidgee River, where honest country charm meets untapped economic potential.

On first appearances, it's tempting to assume we're a sleepy little Shire but visitors and investors alike are well advised to take a closer look.

Narrandera Shire is home to a broad range of agricultural, transport, manufacturing and tourism enterprises, all part of our stable and diverse economy.

We have seen a huge increase in investment in the region thanks to some significant trade deals, our relative water security and advances in telecommunications.

Our well-serviced location and low cost land options are simply too good to pass up for industries such as cotton, nuts, poultry and aquaculture, to name just a few.

With a focus on growth and prosperity for all who live and invest in the Shire, our Economic Development unit is intent on providing investors and new businesses with all the support they need to thrive here.

And if that's not enough, our idyllic townships, enduring Aboriginal culture, vibrant arts scene, sporting obsession and abundant lifestyle choices are waiting here for you to explore.

It's official

Narrandera Shire is open for business. We invite you to take a closer look.

You want

Affordable land and property options

A streamlined development process

Support from an active local council

Easy access to information and data

Industry and local contacts

Opportunities to grow your customer base

Reliable transport and freighting

A great place to enjoy a full and happy life

We offer

Choice – a wide range of heavy industrial, light industrial, farming, commercial, and residential land to suit your needs and your budget.

Competitive prices – better value for your new or growing business.

Fast DA approvals – quicker than most in the state, you can set up your business faster.

Economic Development and Investment Attraction Manager – your go-to person for initial enquiries, set-up needs and ongoing support.

Advocacy – a welcoming and confidential council focused on economic development, and experienced in lobbying for improvements to regional infrastructure and services.

Direct engagement – we conduct regular industry briefings and tours to better understand your business needs and its value to the Shire.

Online – information at your fingertips to assist in timely decision-making.

In-person support – if you can't find what you're looking for on our website we offer in-person support to fill your information gaps.

Direct links – our team is happy to facilitate contact with business advisory and support services, and guide you toward opportunities for networking and professional development.

Business events – whether it's industry-specific or a local push, we provide your business with opportunities to showcase and promote your products and services.

Excellent transport and logistics services – with air, train and road options covered, you'll be able to move your products and your people with ease.

Thriving community – although each township is different, across the Shire you'll find country hospitality, a robust community spirit and proud heritage. We enjoy a lower cost of living, easy commutes, great sporting options, family-friendly facilities and a vibrant and growing cultural heart.

At a glance

Location

At the centre of the Riverina, New South Wales, and at the junction of the Sturt and Newell Highways, Narrandera is at the geographical centre of a major food producing region with all the opportunity that serves up.

Area 4117km²

Towns, villages and locales

Narrandera, Barellan, Grong Grong, Binya, Colinroobie, Corobimilla, Gillenbah, Kamarah, Landervale, Moomboodool and Sandigo.

Population approx. 5976 people

Median age 44

Average temperature

31.6°C in Summer
15°C in Winter

Average annual rainfall

466 mm



Our economy

\$340 million
Gross Regional Product

\$67 million
Building approvals in 2016

529 Businesses

(ABS 2015/2016)

Major sectors

Agriculture, health and aged care, manufacturing, retail and tourism.



Major employers

Total value of Agricultural sector
\$128.9 million

19% of local workforce employed in this sector

- Grants Sawmilling
- Narrandera Fisheries Centre
- Manildra Flour Mill
- Hutchins Bros Engineering
- Bio Ag – Organic cropping systems
- Agri Australis – Hazelnut farm
- PIC Australia – Piggery
- ProTen – Poultry farm
- Teloca House – RSL Lifecare
- Opal Narrandera – Aged care
- Narrandera Shire Council
- Murrumbidgee Local Health District – Narrandera Health Services
- Department of Education



Water

The Shire has a secure water allocation surplus to fulfil current and projected needs.



Telecommunications

Access to the National Broadband Network is being implemented with fixed wireless and satellite access in place.



Education

The Shire is home to five primary schools, two high schools and the Riverina Institute of TAFE campus.



Service industry

Narrandera has a strong service industry, with major components being retail, visitor services and health services.

Agriculture

Part of the nation's food bowl – set deep in Riverina territory and bordering the MIA – Narrandera Shire is part of one of the most productive agricultural regions in Australia. As such, producers in the Shire have ready access to an extensive range of agri-business and services, value-adding activities and freight services.

- **\$77.8 million** per annum in cereal crops
- **\$31.6 million** per annum in livestock
- **\$6.3 million** per annum in livestock products
- **2 million tonnes** per annum flour processed
- **15,000 tonnes** per annum high-grade steel manufactured
- **local growers** supply export and domestic markets

Land availability

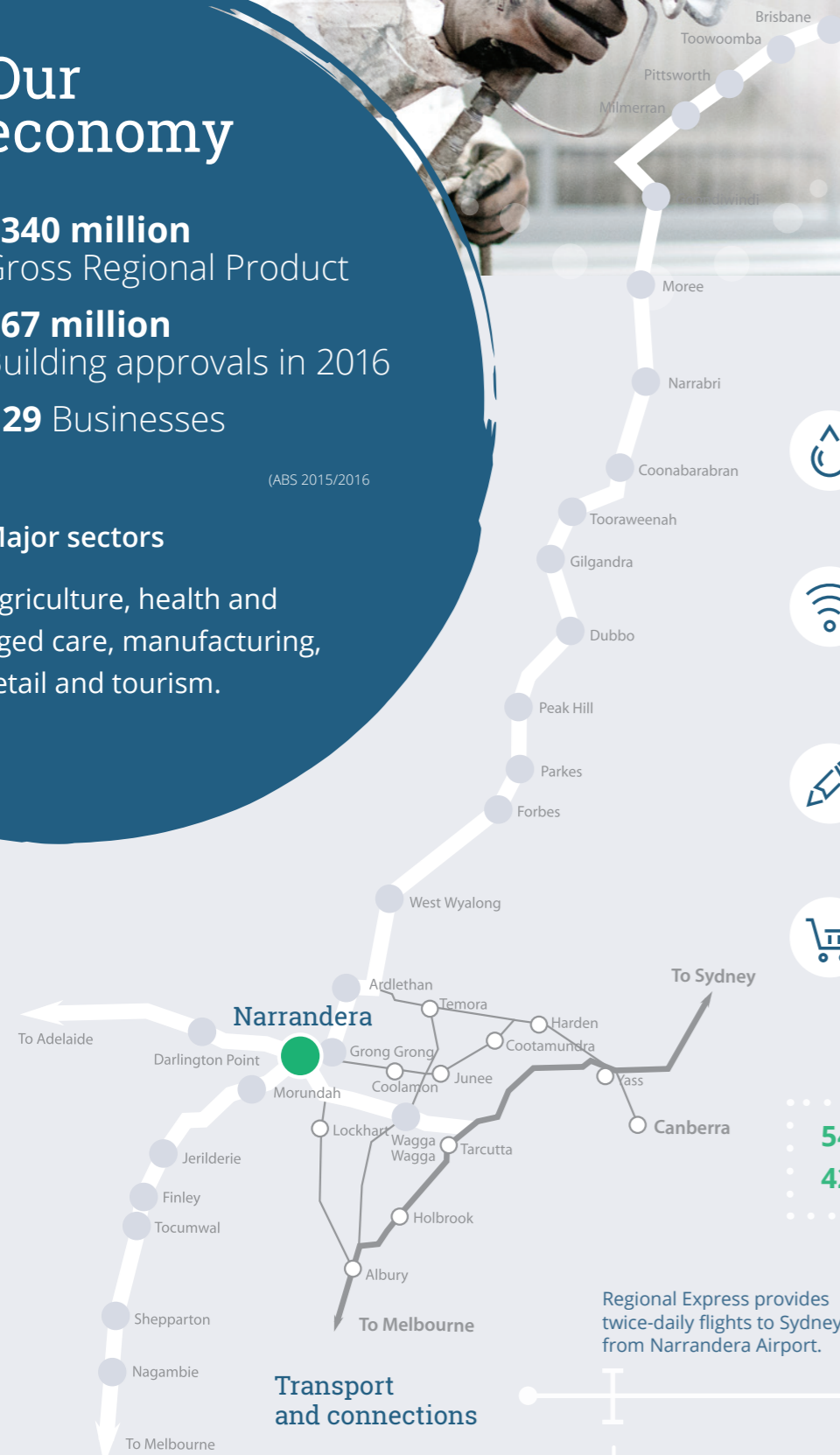
A range of competitively priced residential, rural-residential, commercial and industrial land and premises is on offer in Narrandera. Land with good buffer zones, ideal for intensive agriculture, is available.

Red Hill Industrial Estate

Large tracts of serviced land, and land with access to services is available at Red Hill Industrial Estate. Located just 1km from the Newell Highway, and well buffered, the Estate is zoned for General Industry and suitable for odour and noise producing operations. It has road train and HPV access. Land may be subdivided according to the needs of the purchaser.

Business expansion and investment

- **\$70 million** Hazelnut plantation investment (Agri Australis)
- **\$63 million** investment in poultry meat production (ProTen)
- **\$6 million** invested to increase capacity of facilities and install a packing plant (Manildra Mill)
- **\$2.2 million** investment in expansion of Barellan Grain Receival site (GrainCorp)
- **2 local aquaculture businesses** expanding production of Murray Cod fingerlings
- **NSW Fisheries research centre \$1.1million** laboratory upgrade
- **Three proposed Solar Farms - \$240 million**



549kms from Sydney
428kms from Melbourne

Transport and connections

Regional Express provides twice-daily flights to Sydney from Narrandera Airport.



Trainlink provides a weekly train service to Sydney, with daily coach services to Wagga Wagga and Griffith.

Rail access to ports in Sydney, Port Kembla and Melbourne.



Rail freight connected to Main Southern Railway line (Sydney to Melbourne).

Narrandera is intersected by the Newell and Sturt (national) highways and Burley Griffin Way, providing direct access to capital cities.





Contact the
Economic Development Manager
on 02 6959 5510

Narrandera Shire Council
141 East Street Narrandera NSW 2700
Email. council@narrandera.nsw.gov.au

www.narrandera.nsw.gov.au

Proudly funded by the
NSW Government in association
with Narrandera Shire Council.

