



ATTACHMENTS

UNDER SEPARATE COVER

Ordinary Council Meeting

13 December 2017

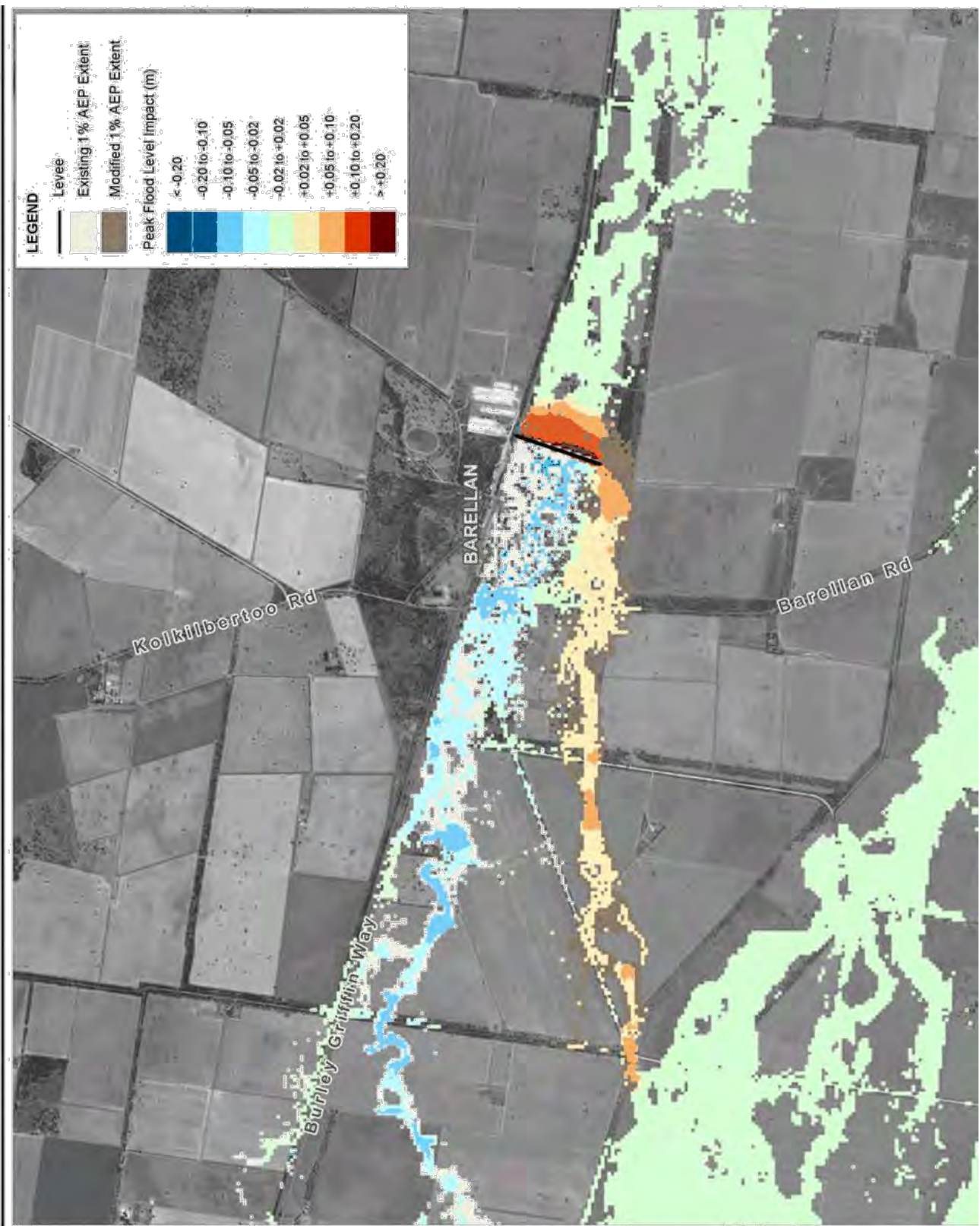
Barellan Floodplain Risk Management Study and Draft Plan
Peak Flood Level Impacts **Levee Option 1a**

65

Appendix C. Peak Flood Level Impacts Levee Option 1a

k:\N20551_Barellan_Flood_Study\Docs\R.N20551.002.03.docx





Title:
Barellan FRMS&P Levee Option 1a
2% AEP Change in Peak Flood Level

Figure:
C-1

Rev:
A

BMT WBM endeavours to ensure that the information provided in this map is correct at the time of publication. BMT WBM does not warrant, guarantee or make representations regarding the currency and accuracy of information contained in this map.

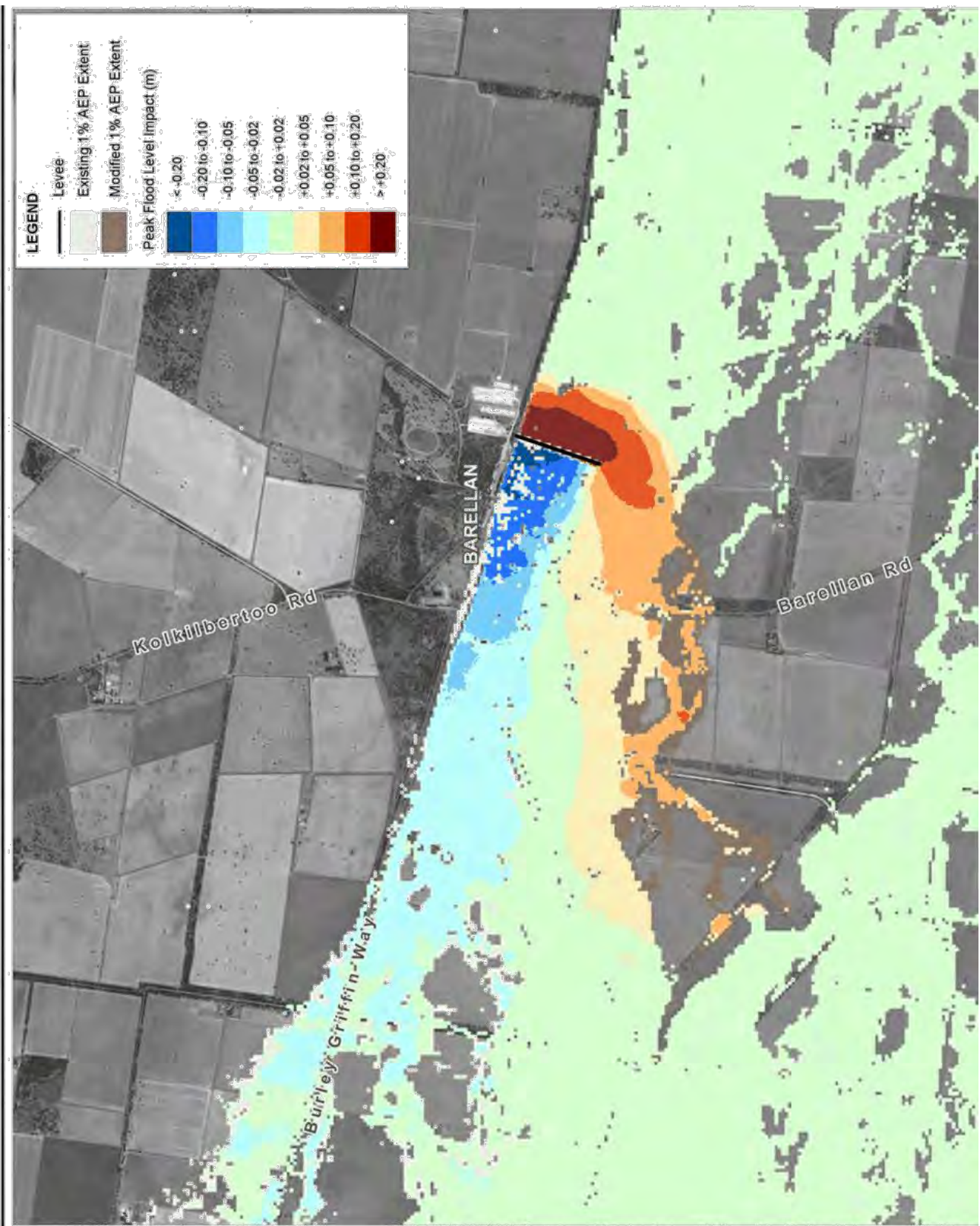


0 0.75 1.5km
 Approx. Scale



www.bmtwbm.com.au

Filepath: Z:\N20551_Barellan Flood Study\MapInfo\MapProcess\FRMS&P_Opt_1a_2%_AEP_WCB



Title:
Barellan FRMS&P Levee Option 1a
1% AEP Change in Peak Flood Level

Figure:
C-2

Rev:
A

BMT WBM endeavours to ensure that the information provided in this map is correct at the time of publication. BMT WBM does not warrant, guarantee or make representations regarding the currency and accuracy of information contained in this map.

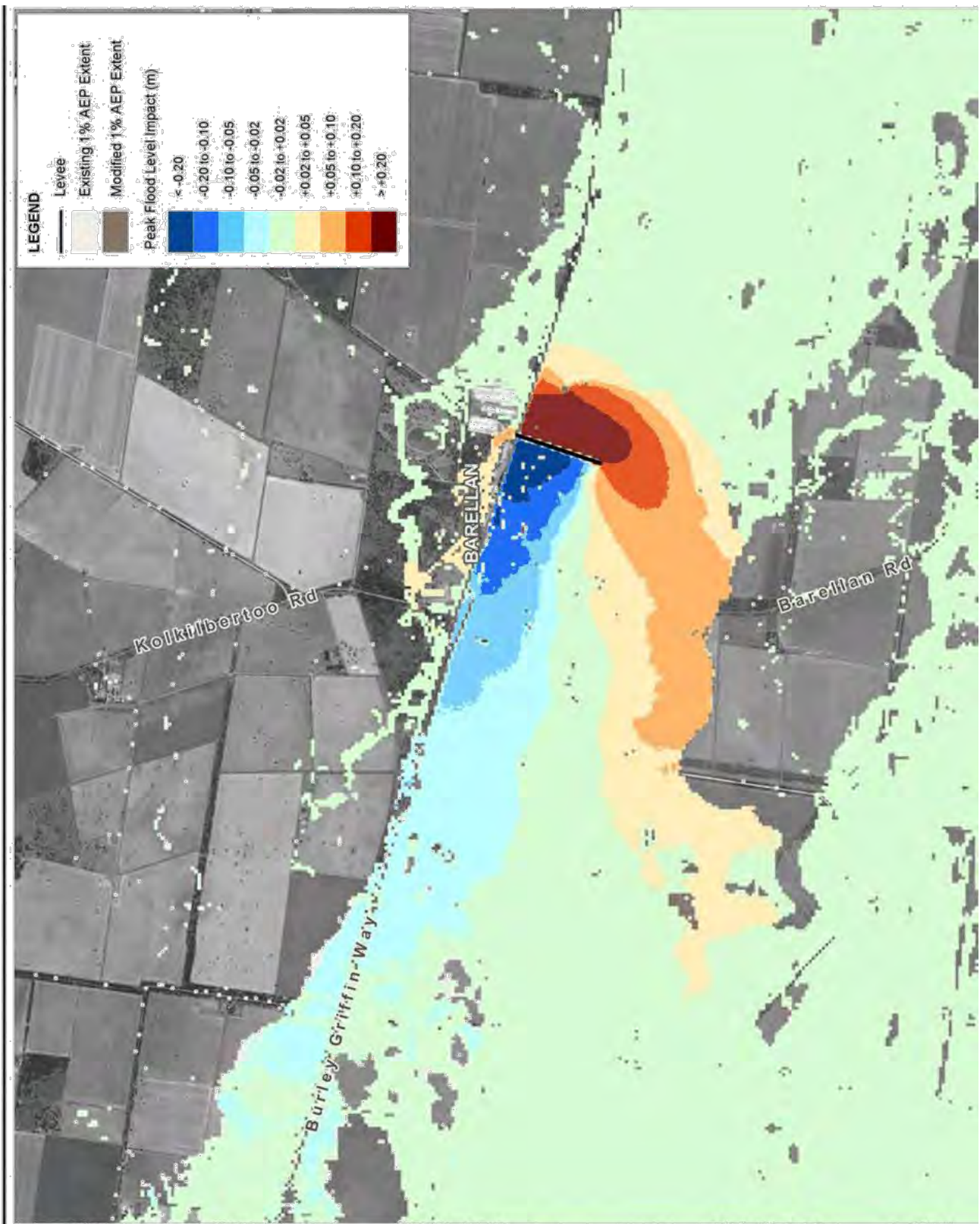


0 0.75 1.5km
 Approx. Scale



www.bmtwbm.com.au

Filepath: Z:\N20551_Barellan_Flood_S Study\MapInfo\Workspaces\FRMS&P_C02_170916_LAWA_GM_01x_100_WBP



Title:
Barellan FRMS&P Levee Option 1a
0.5% AEP Change in Peak Flood Level

Figure:
C-3

Rev:
A

BMT WBM endeavours to ensure that the information provided in this map is correct at the time of publication. BMT WBM does not warrant, guarantee or make representations regarding the currency and accuracy of information contained in this map.

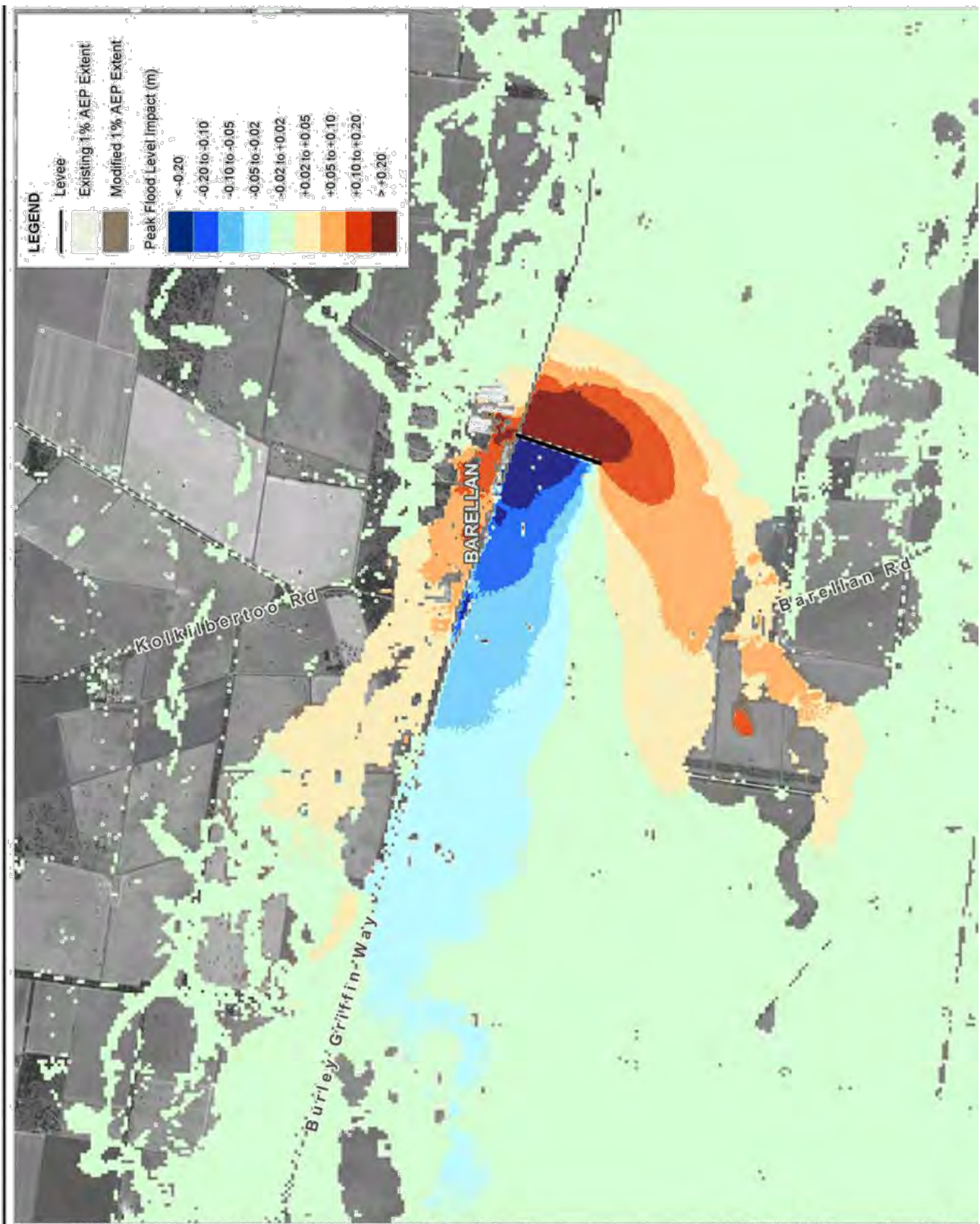


0 0.75 1.5km
 Approx. Scale



www.bmtwbm.com.au

Filepath: F:\N20551_Barellan Flood Study\MapInfo\Workspaces\FRMS&P_C03_170916_L1.mxd; G:_014_200_WCB



Title:
Barellan FRMS&P Levee Option 1a
0.2% AEP Change in Peak Flood Level

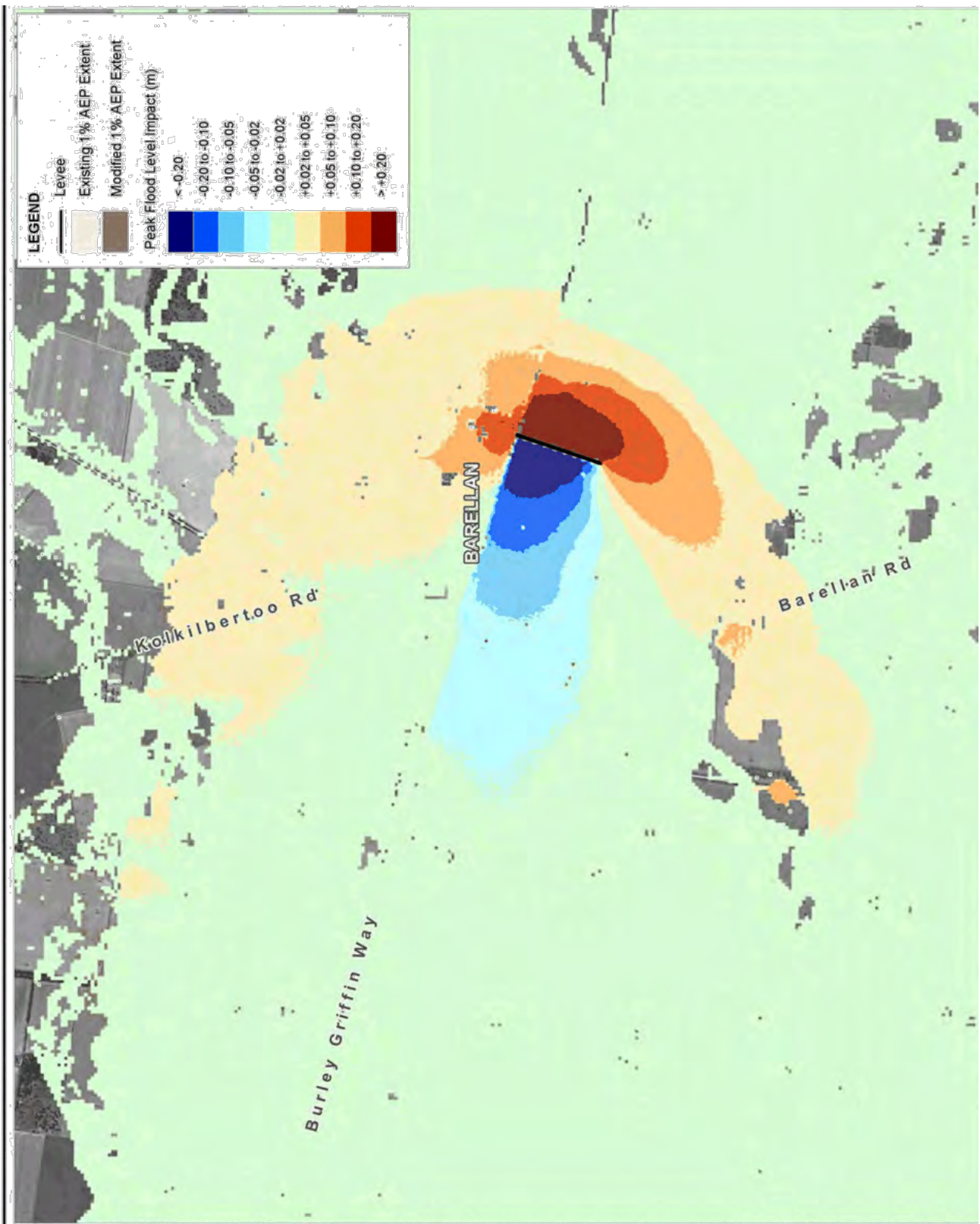
Figure:
C-4

Rev:
A

BMT WBM endeavours to ensure that the information provided in this map is correct at the time of publication. BMT WBM does not warrant, guarantee or make representations regarding the currency and accuracy of information contained in this map.



Filepath: F:\N20551 - Barellan Flood Study\MapInfo\Workspaces\FRMS&P_C04_170916_Layer_C04_01_500.WDB



Title:
Barellan FRMS&P Levee Option 1a
Extreme Flood Event

Figure:
C-5

Rev:
A

BMT WBM endeavours to ensure that the information provided in this map is correct at the time of publication. BMT WBM does not warrant, guarantee or make representations regarding the currency and accuracy of information contained in this map.



0 0.75 1.5km
 Approx. Scale



Filepath: Z:\N0551_Barellan_Flood_Summary\Work\FRMS&P_C05_170916_Levee_Opt_01a_BMT_WBM