



# **ATTACHMENTS**

**UNDER SEPARATE COVER**

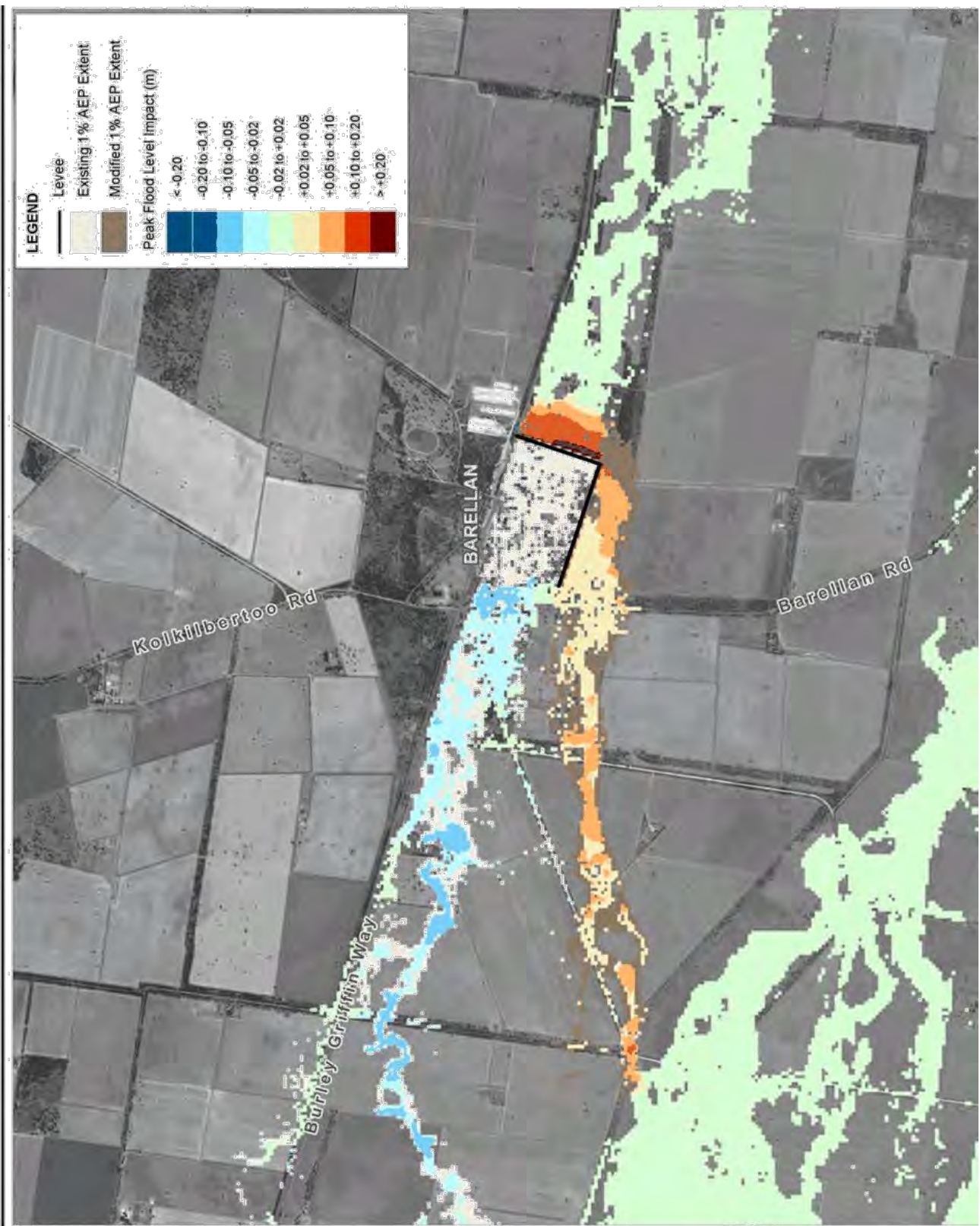
**Ordinary Council Meeting**

**13 December 2017**

Barellan Floodplain Risk Management Study and Draft Plan  
Peak Flood Level Impact **Maps Levee Option 1b**

66

## **Appendix D. Peak Flood Level Impact Maps Levee Option 1b**



**Title:**  
**Barellan FRMS&P Levee Option 1b**  
**2% AEP Change in Peak Flood Level**

**Figure:**  
**D-1**

**Rev:**  
**A**

BMT WBM endeavours to ensure that the information provided in this map is correct at the time of publication. BMT WBM does not warrant, guarantee or make representations regarding the currency and accuracy of information contained in this map.

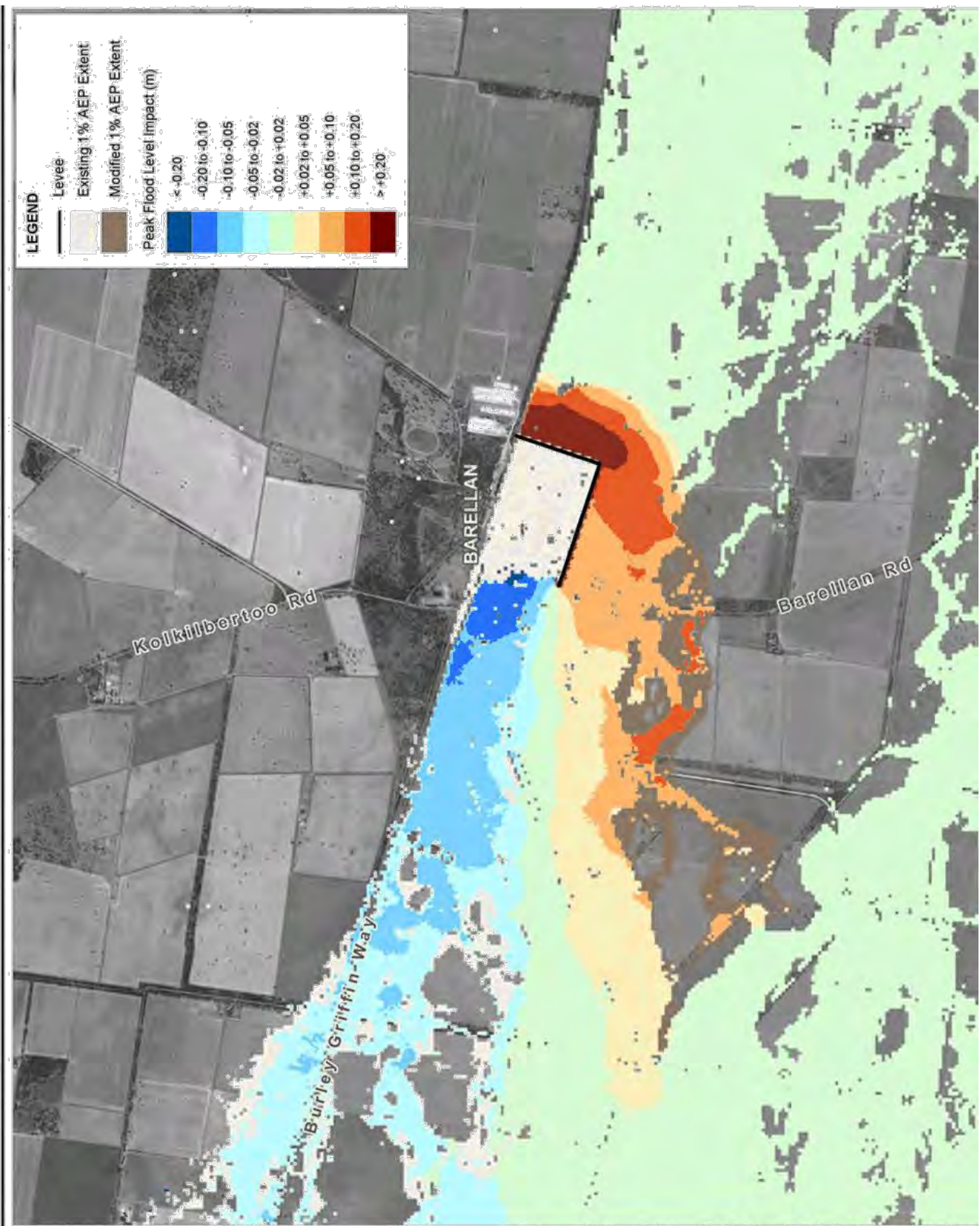


0 0.75 1.5km  
 Approx. Scale



www.bmtwbm.com.au

Filepath: F:\N20551\_Barellan Flood Study\MapInfo\Workspaces\FRMS&P\_D1\_170916\_LAY\01\_01\_16\_WBP



**Title:**  
**Barellan FRMS&P Levee Option 1b**  
**1% AEP Change in Peak Flood Level**

Figure:  
**D-2**

Rev:  
**A**

BMT WBM endeavours to ensure that the information provided in this map is correct at the time of publication. BMT WBM does not warrant, guarantee or make representations regarding the currency and accuracy of information contained in this map.

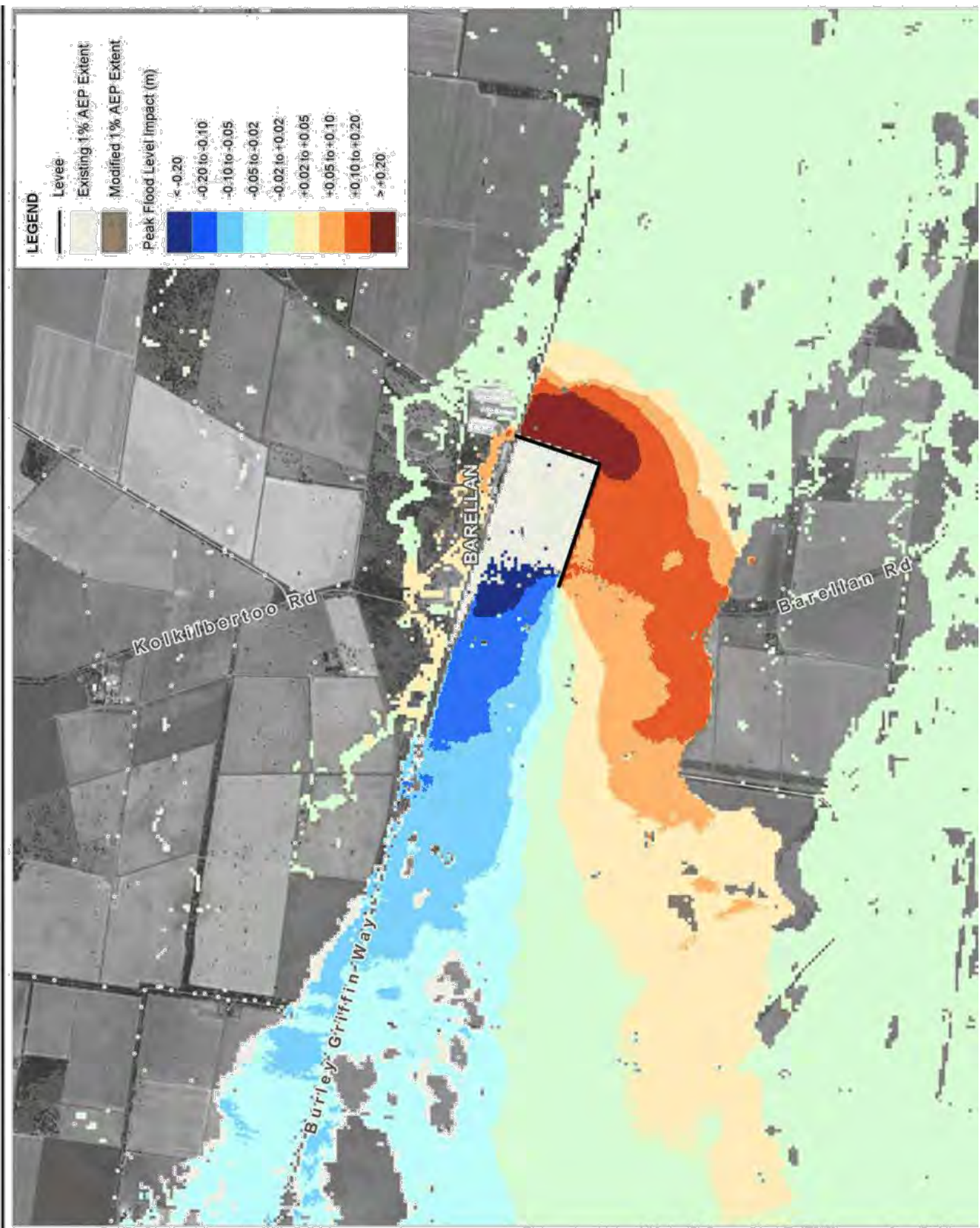


0 0.75 1.5km  
 Approx. Scale



[www.bmtwbm.com.au](http://www.bmtwbm.com.au)

Filepath: Z:\N20551\_Barellan\_Flood\_Simulation\Workbooks\FRMS&P\_D02\_170916\_LAWA\_G01\_01x\_100\_WCB



Title:  
**Barellan FRMS&P Levee Option 1b**  
**0.5% AEP Change in Peak Flood Level**

Figure:  
**D-3**

Rev:  
**A**

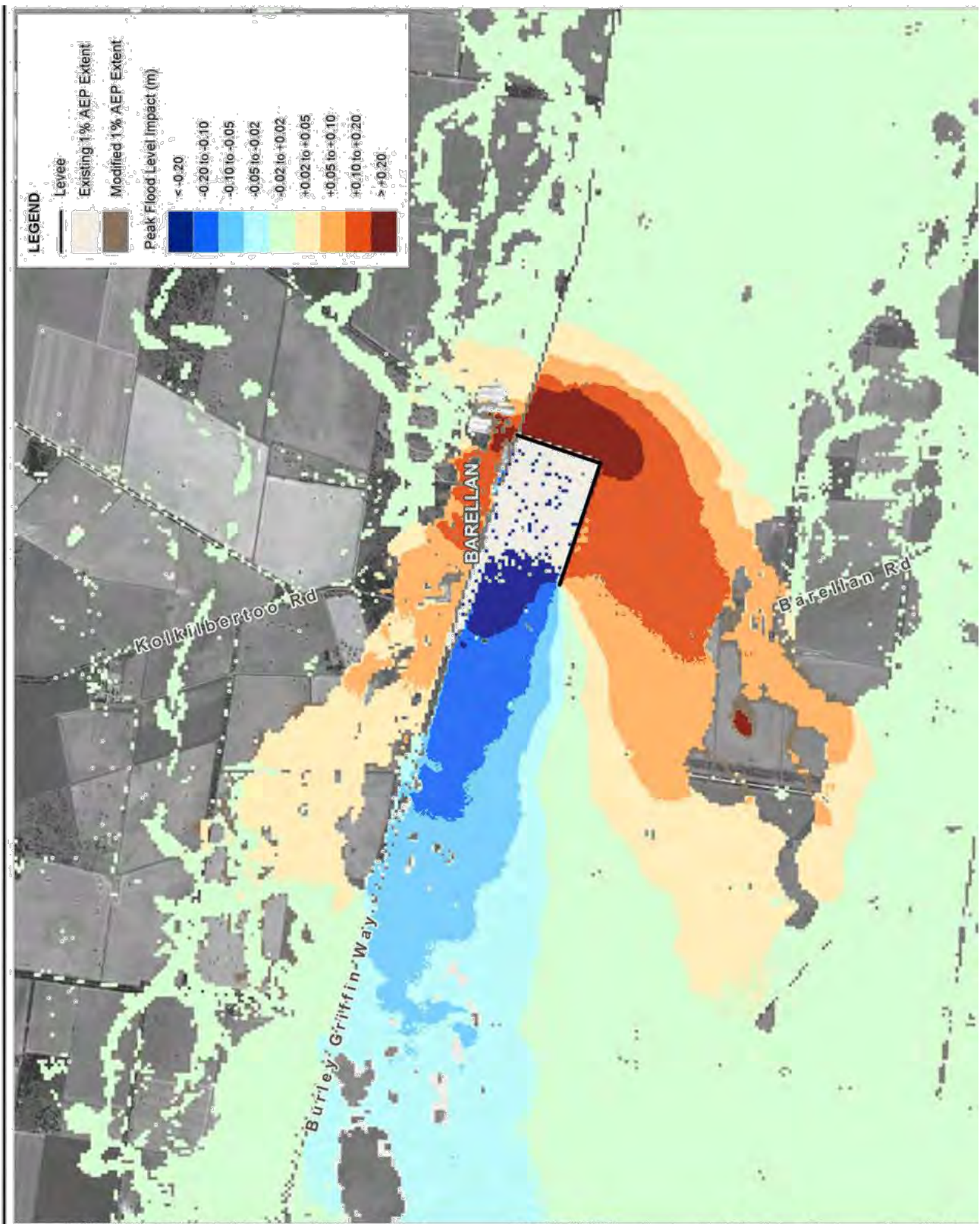
BMT WBM endeavours to ensure that the information provided in this map is correct at the time of publication. BMT WBM does not warrant, guarantee or make representations regarding the currency and accuracy of information contained in this map.



0 0.75 1.5km  
 Approx. Scale



Filepath: \\F:\N2554 - Barellan Flood Study\MapInfo\Workspaces\FRMS&P\_D3\_170916\_Layer\_Col\_015\_200.mxd



Title:  
**Barellan FRMS&P Levee Option 1b**  
**0.2% AEP Change in Peak Flood Level**

Figure:  
**D-4**

Rev:  
**A**

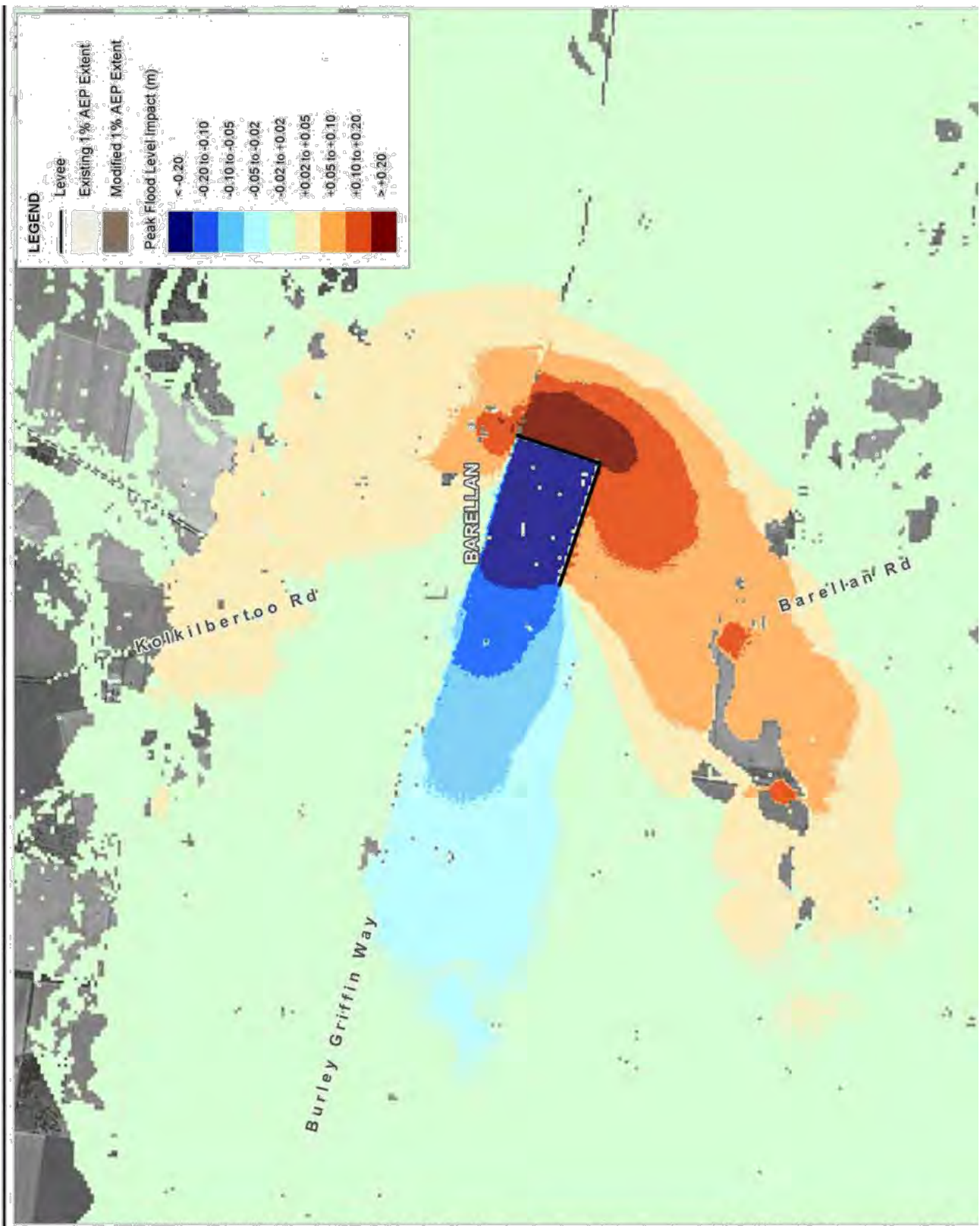
BMT WBM endeavours to ensure that the information provided in this map is correct at the time of publication. BMT WBM does not warrant, guarantee or make representations regarding the currency and accuracy of information contained in this map.



0 0.75 1.5km  
 Approx. Scale



Filepath: F:\N20551\_Barellan\_Levee\_Summary\MapDocs\FRMS&P\_0.2%\_170916\_LAYERS\_GM\_01N\_500\_MDP



Title:  
**Barellan FRMS&P Levee Option 1b**  
**Extreme Flood Event**

Figure:  
**D-5**

Rev:  
**A**

BMT WBM endeavours to ensure that the information provided in this map is correct at the time of publication. BMT WBM does not warrant, guarantee or make representations regarding the currency and accuracy of information contained in this map.



0 0.75 1.5km  
 Approx. Scale



Filepath: \\LAN20551-Barellan-Flood-Submissions\Work\Projects\FRMS&P\DMS-170006-1\Area-01\016-BME-WBP